



FORMTOOL
PRECISION ENGINEERING

ROLLSHOP CONSUMABLES

DRIVEN BY PRECISION & INNOVATION

Providing high precision tooling solutions for
the steel mill industry around the world.

“ Accord has had a relationship with Formtool for over 20 years and they are our preferred supplier for special purpose tooling for our precision manufacturing plant.

Being New Zealand's largest manufacturer of high tolerance components, we require our tooling to be right the first time, every time and delivered on time.

And this is where Formtool outshines other tool grinding companies. They have served us well over the years. ”

Alec Mandis, CEO, Accord Precision, New Zealand

www.accord.co.nz

OUR DNA

What guides us?

IT ALL STARTED IN 1972

Taking advantage of technological innovations Formtool started its journey supplying custom ground precision tooling to steel processing and other manufacturing industries.

Recognising the change in market demand the company continues to flourish and evolve.

How did we get here? We assisted a customer who had issues with their notching tools not being asymmetrical. After successfully resolving the flaws in the notching tools they were able to hit the ground running. Through word of mouth and good customer relations, Formtool became a notable solutions manufacturer for the steel mill industry.

Formtool manufactures for New Zealand and steel mills worldwide. We are heavily represented in the Asia Pacific and the greater Middle East region.

We are a member of New Zealand Trade and Enterprise (NZTE), and have been supported by NZTE over the past 15 years with our expansion into international markets. NZTE can be contacted via the New Zealand Consulate in many countries.

BUILDING ON A HIGHLY VALUED TRADITION OF DELIVERY AND INNOVATION.

Working with many steel mills over a long period of time we have encountered both common and unique issues facing our customers during their manufacturing processes.

Formtool has a fully equipped workshop, efficient manufacturing processes and we have highly skilled staff. This allows us to develop high-quality products and attract a good customer base who trust Formtool staff and products. Our fully equipped workshop and efficient manufacturing processes enables us to develop high-quality products.

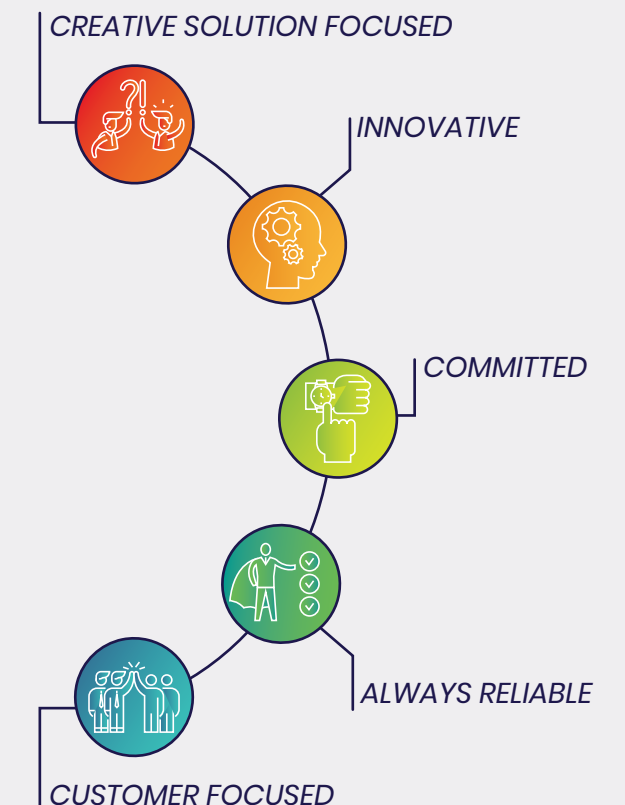
We are passionate about continuously moving forward, innovating, improving and using modern technologies to develop a powerful combination of precision and economical production.

SKILLED TEAM & SMART PROCESSES DRIVE EFFICIENCY

We combine resourcefulness, expert skills, experience and commitment to provide a total solution service. We are continually inspired to gain new knowledge and skills to enhance the quality of our services for our clients. We invest in our customers, our people, and where standard machinery has restraints in production, our experts have built our own special purpose CNC grinders to ensure fast production with the pinpoint accuracy required.

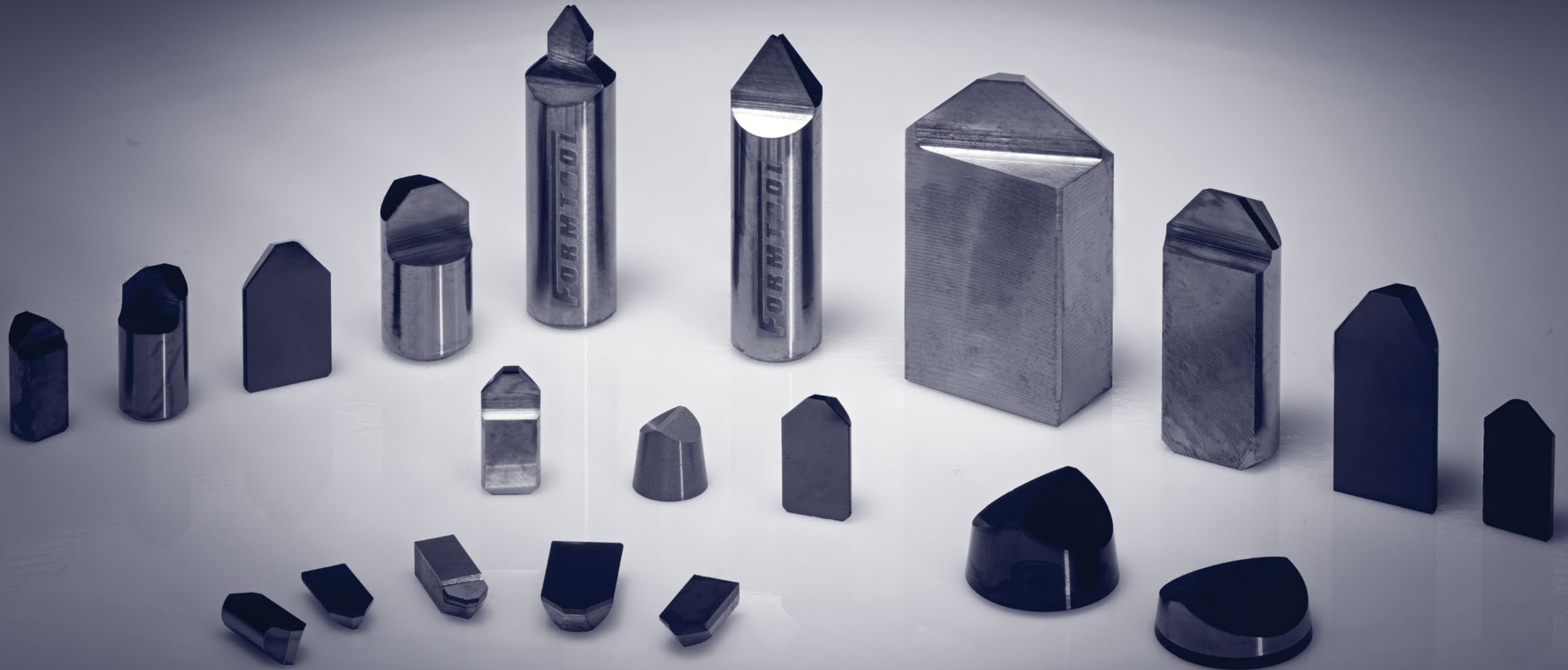
We have the right machines and modern technology, but it is our people that make all the difference.

WE MANUFACTURE ANY QUANTITY FROM PROTOTYPES TO LARGE PRODUCTION RUNS



Why Formtool?

Services & Tools



Benefits of Working with Formtool

As a company we pride ourselves on working closely with our customers to create product 'fit-for-purpose' helping to maximise customer value — through innovative use of machinery, keeping up to date with the latest trends and developments in the steel mill industry.

We have a worldwide customer base who trusts and values Formtool augmented products.

The key foundations of our business are to provide quality and service; meet customer timeframes; help customers to resolve issues by sharing our extensive knowledge and to be flexible to adapt to customers individual requirements.

Formtool makes tools which last, first time, every time.

We can deliver a range of benefits to our customers including:

Tapping into our extensive steel mill industry experience

High quality tools using European made quality raw material PCD, PCBN and Carbide

Quality case hardened materials guaranteeing longer-lasting tools

Experienced trade-staff, specialised manufacturing methods and a fully functioning QA department

Open communication, good documentation and proven quality control processes

An ability to deliver large production runs

Delivering on agreed delivery timeframes, every time

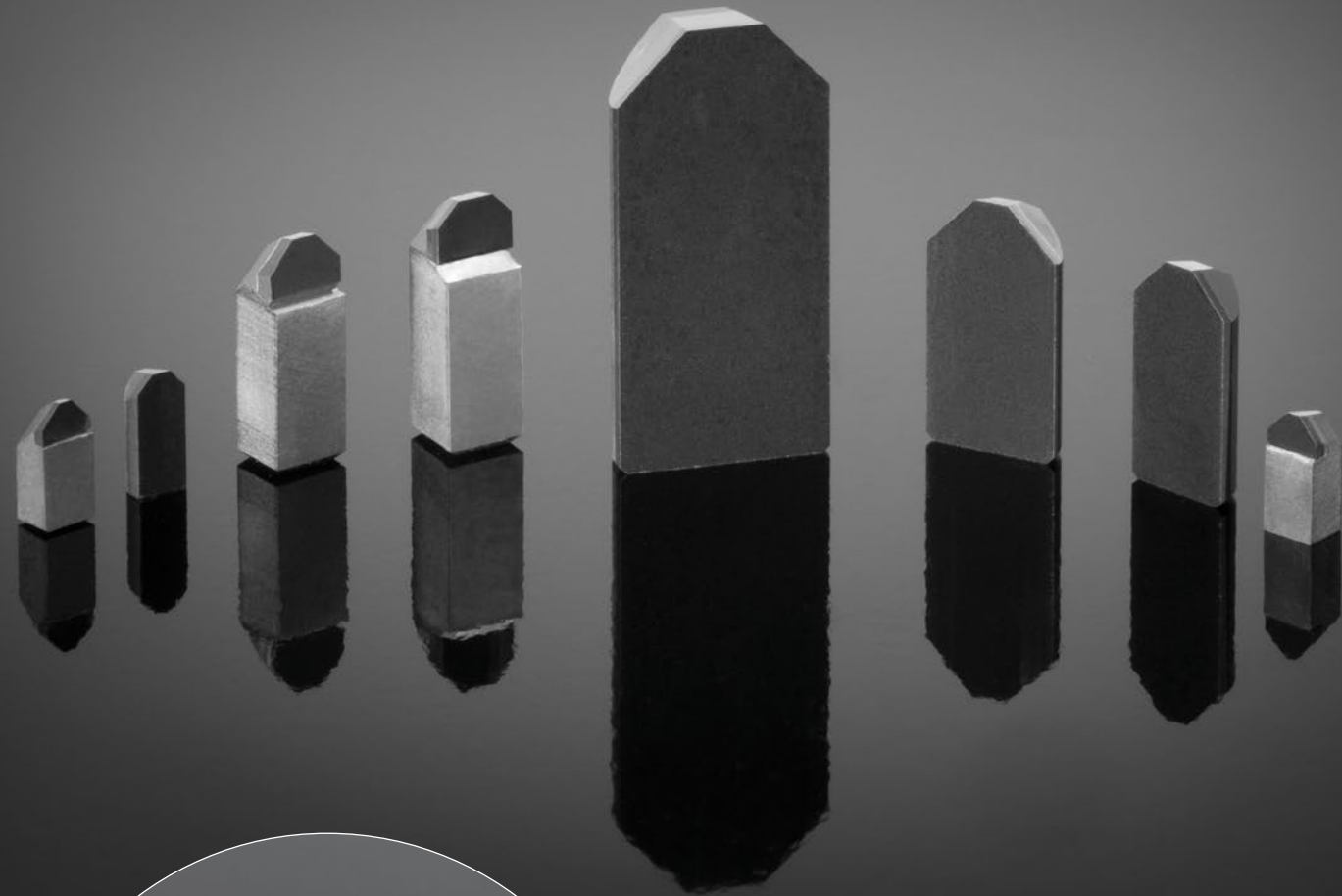
Compliance with all your requirements — from official tender processes through to contract and pricing arrangements, shipping and legal documentation



PCD and CBN Notching Tools

Formtools specialists will grind your specific profile on both round and square tool stock.

- All tools are precision finished ground, making them highly accurate with long-lasting edges
- Tools are manufactured accurately to customer drawings
- All tools are quality checked by Formtool's QA Department, ensuring profile accuracy
- Tools are dispatched in safe and easy-to-use packaging to guarantee quality and preventing any chipping while in transit
- Recommendations can be provided for notching of Carbolic Rolls and Formtool's specialists can advise where PCD or PBN should be used



IMD Marking Tools

Formtool also manufacture IMD Marking Tools:

- Made with High Grade Polycrystalline Diamond Inserts
- Length and diameter as specified by customer

Carbide Notching Tools

We manufacture and supply both solid and composite tool steel arbours to suit Atomat, Shin-Il Herkules and other machine manufactures.

- Formtool only use European Carbide
- With the considerable experience of the Formtool team, we can assist customers with recommendations on grades, angles and any other specific challenges they may have
- Formtool tools for both Cast Iron and HSS Rolls
- All Tools supplied by Formtool are CNC ground
- Formtool also offer PVD coatings for longer life, increased productivity and running at higher speeds.



IMD Marking Tools

Formtool also manufacture a range of IMD Marking Tools:

- Manufactured from K01 Carbide
- CNC ground for complete accuracy
- Custom manufactured to customer's detailed specifications

Tool Arbours and Tool Bases

We manufacture and supply both solid and composite tool style arbours to suit Atomat, Shin-II and Herkules and others.

Our tool Arbour products are made from:

- High Grade steel
- A hardened and finished ground product that ensures:
 - superior wear resistance
 - longer tool life



Tool Holders

Formtool manufacture tool holders to customers specific requirements, insert shape and to meet the size for the customers machines.

- Made from high grade steel
- CNC machined for accuracy and repeatability
- Manufactured to meet the requirements of individual machines

Miscellaneous

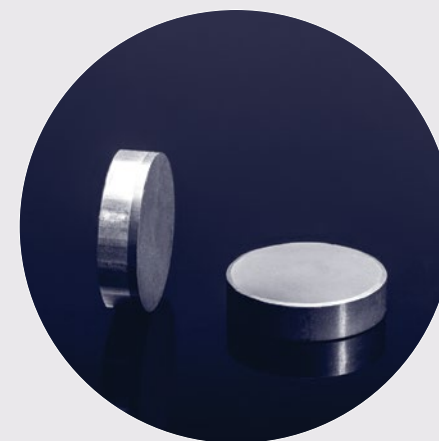
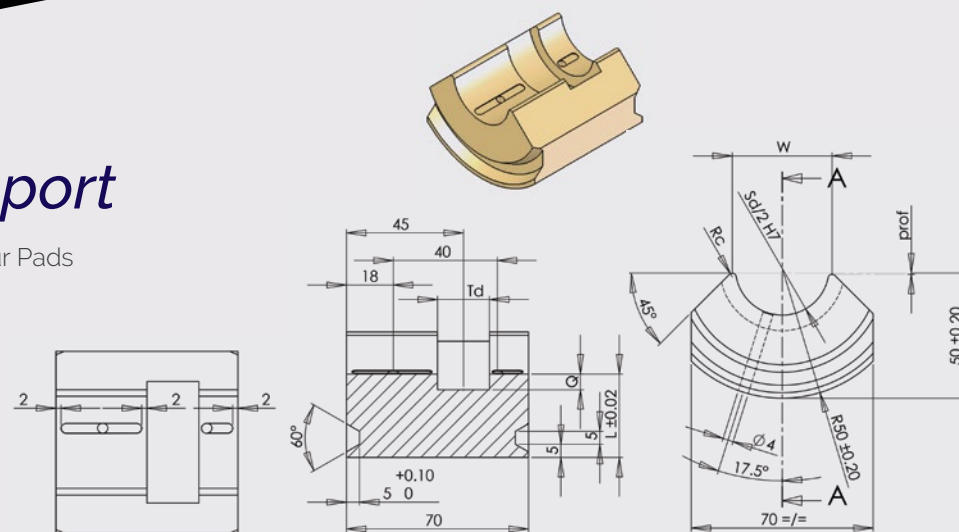
- Machine Parts
- EDM Stamps
- EDM Electrodes Letters, Numbers and so on
- CBN Grooving Tools



Arbour Support

Formtool can supply Arbour Pads in a variety of finishes:

- Carbide
- Bronze
- Brass



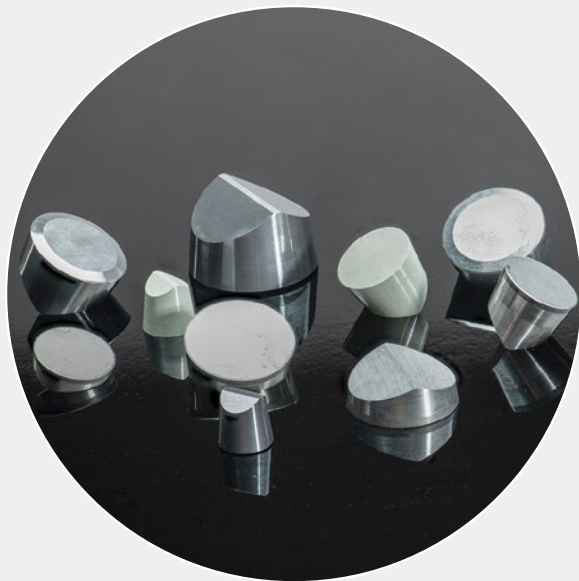
Formtool also manufacture CBN grooving tools to ISO specifications or to customers individual requirements.

Turning Ceramic and CBN Inserts

Formtool manufacture standard ISO Inserts with PCBN and PCD to customers individual requirements. We also provide matching Tool Holders for the Inserts.

For turning cast iron HSS rolls. Formtool can manufacture these in ceramic and PCBN Grade.

- Ceramic 150 Grade for machine cast iron and HSS rolls
- 300 Grade for machining cast iron rolls with grooves
- CBN Solid and Flat Top for machining cast iron and HSS rolls with grooves



The customer connection

Each customer journey is unique, so it's important we deliver on the whole experience, from beginning to the end.

TYPE	DIMENSIONS(MM)		CERAMICS		PCBN GRADE	
	d	t	150	300	FLAT TOP	SOLID
RCGX 060300	6.35	3.18			✓	✓
RCGX 090300	9.52	3.18			✓	✓
RCGX 120400	12.70	4.76			✓	✓
RCGX 060600	6.35	6.35	✓	✓	✓	✓
RCGX 090700	9.52	7.94	✓	✓	✓	✓
RCGX 120700	12.70	7.94	✓	✓	✓	✓
RCGX 151000	15.87	10.00	✓	✓	✓	✓
RCGX 191000	19.05	10.00	✓	✓	✓	✓



Precision Engineering

Our workshop is equipped with the latest CNC machinery, cylindrical grinders, surface grinders and tool and cutter grinders enabling us to manufacture high precision components and replacement parts to tight tolerances. We offer either component manufacture to your drawings or full turn-key product development.

We work from your sketch or CAD drawing file. We can do short to large production runs. We pride ourselves not only on accuracy and delivering your product on time but at a fair price too.

Making a difference, globally

We have built our Rollshop consumables business by being able to have open communication and working closely with our customers to meet their targets and to help them overcome their challenges.

We research and work with different steel mills to ensure continuous improvement and innovation of the products and services to our clients.

We manufacture Rollshop Consumables for our customers throughout Australia, Canada, Egypt, Germany, Korea, Kuwait, Malaysia, Morocco, New Zealand, Oman, Qatar, Saudi Arabia, Turkey, UK, United Arab Emirates, USA, Vietnam and more.

Low Carbon Producer

In our view, our tool steel products are pretty clean and green. Our tools are crafted in New Zealand with 80% renewable electricity from hydro, wind and geothermal resources. Our production processes meet New Zealand's environmental requirements and global quality standards.



We manufacture any quantity, from prototypes to large production runs

CREATIVE SOLUTION FOCUSED

Never satisfied. We always find the right solutions. When our customers are challenged, we work with them to deliver fresh innovative thinking/ thinking outside the square.



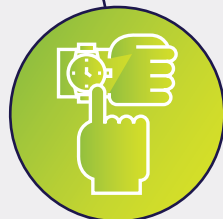
INNOVATIVE

We will try new ways. Just because no one else has done it, that doesn't make it impossible. We work to find a better way.



COMMITTED

We make it happen and we deliver.



ALWAYS RELIABLE

Performance guaranteed – every item is produced with great attention to detail to meet the highest required tolerances. Our quality management system assures delivery and reliability.



CUSTOMER FOCUSED

We understand that our products contribute to creating customer's products so we do our best to support them in service, in solutions and quality of our products.



FORMTOOL
PRECISION ENGINEERING

WHITE CASE STUDY

In 2008 a new customer came to us with concerns around issues they had with the Notching Arbours not being straight and regular breakages.

We understood and appreciated this concern as not only are tool breakages very costly but also the risk of these broken tools doing further damage to expensive machinery & equipment is a major business concern. Add on top of that the unexpected production downtime & delivery delays for their clients and the picture is dire!

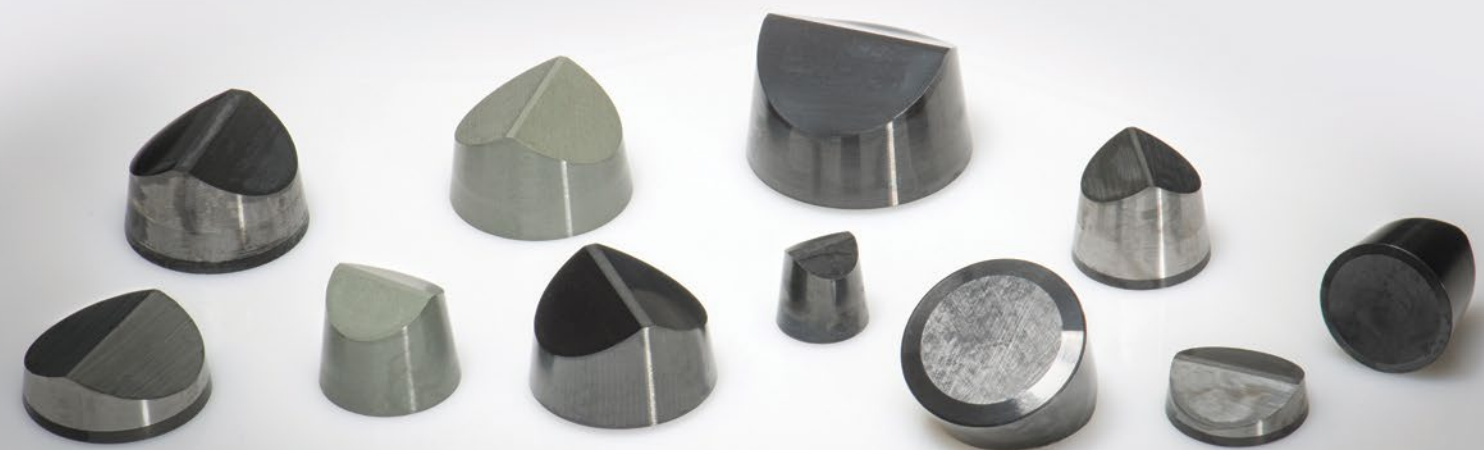
With our strong engineering background, experienced staff and fully equipped workshop we worked with the client to deliver a product which has now become one of our standard product lines.

“ Formtool notching tool bits last more than 30% longer and have far less edge breakages than other competitors on the market we have tried.

Their composite arbors and tool arbors are made out of more wear resistant steel which gives them a longer life span of over 50% over other competitors resulting in higher efficiency and real cost savings for us. ”

Team Leader, Pacific Steel

www.pacificsteel.co.nz



Purchase order process



FORMTOOL PRECISION ENGINEERING

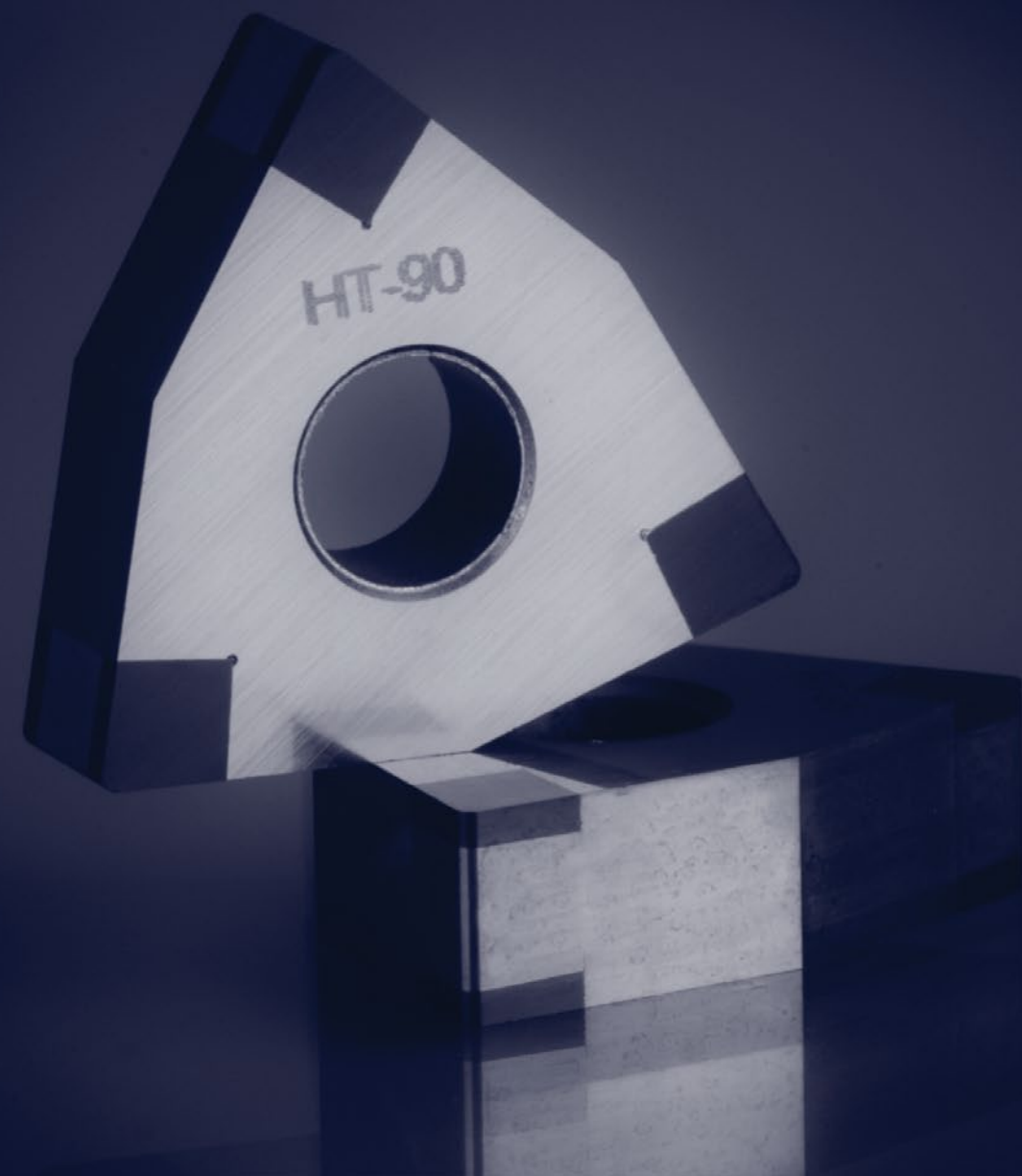
Formtool Precision Engineering is based in Auckland, New Zealand. First established in 1972, the company is owned by directors Rodney and Iris Ewing, since 2003.

Formtool employ highly experienced staff, many with a lifetime of experience in precision tool grinding.

Using only the highest quality tool stock combined with our experience in the specialised field of tool grinding, our cutting tools frequently outperform and outlast our competitors' tools.

Our fast turnaround and international courier service means we can deliver your tooling requirements to your door within a very competitive timeframe.

For all your specialised tooling and precision engineering requirements, contact us, so that we can help you!



FORMTOOL

PRECISION ENGINEERING



HEAD OFFICE

173 Moore Street
Howick
Auckland 2014
NEW ZEALAND

POSTAL ADDRESS

PO Box 22 292
Otahuhu
Auckland 1640
NEW ZEALAND

PHONE

National: 09 534 9572
International: + 64 9 534 9572
WhatsApp: +64 21 046 5106

EMAIL

sales@formtool.co.nz

WEB

www.formtool.co.nz